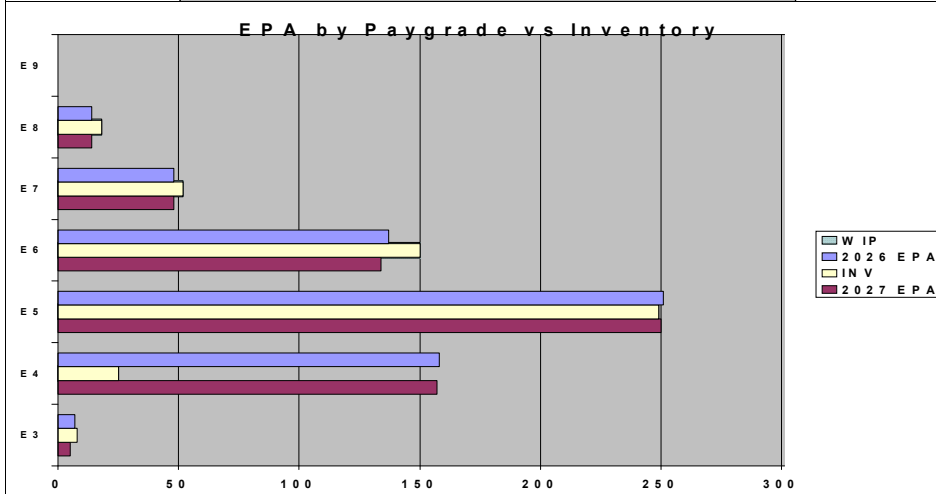
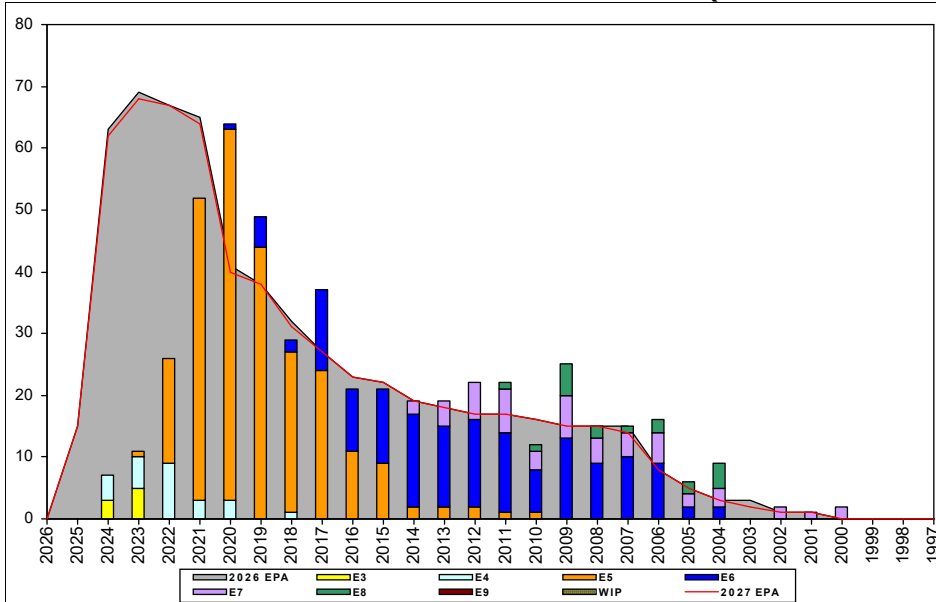


CTI (Middle East/North Africa) - B511



	E1-3	E4	E5	E6	E7	E8	E9	TOTAL
% INV to FY26 EPA	114%	16%	99%	109%	108%	129%		82%
EPA (FY26)	7	158	251	137	48	14		615
INVENTORY	8	25	249	150	52	18		502
EPA (FY27)	5	157	250	134	48	14		608
% INV to FY27 EPA	160%	16%	100%	112%	108%	129%		83%
INV +WIP / FY26 EPA								
INVENTORY			← E-3 and Below WIP					
INV +WIP / FY26 EPA								

Sea Shore Flow		
TOUR	SEA	SHORE
1ST		
2ND		
3RD		
4TH		
5TH		
6TH		
7TH		

FORCE STRUCTURE MANNING TO BA									
PG	SEA	INV	BA	SHORE	INV	BA	SEA + SHORE	TOTAL INV	TOTAL BA
E1-3				200.0%	8	4	200.0%	8	4
E4	15.4%	2	13	15.9%	22	138	15.9%	24	151
E5	140.9%	31	22	84.8%	178	210	90.1%	209	232
E6	130.0%	26	20	106.6%	113	106	110.3%	139	126
E7	155.6%	14	9	89.7%	35	39	102.1%	49	48
E8	200.0%	4	2	108.3%	13	12	121.4%	17	14
E9									
Total	116.7%	77	66	72.5%	369	509	77.6%	446	575

TIS to PG Years	Pay Grade	E1-E3	E4	E5	E6	E7	E8	E9
ALL Navy	TIS		2.2	4.0	8.7	13.8	17.8	21.7
CTI	TIS		2.3	4.0	8.1	13.3	17.1	
TIG to PG Years	ALL Navy	TIG	1.3	1.8	4.7	5.7	5.0	4.6
CTI	TIG		1.8	2.1	4.9	6.7	5.3	

Zone Info

	ZONE A	ZONE B	ZONE C	ZONE D	ZONE E	ALL ZONES
FY26 Manning:	53.0%	105.0%	96.0%	116.0%	100.0%	82.0%
FYTD RENL Rate:	57.1%	52.5%	55.6%	95.0%	7.7%	53.7%

NOTES

ARABIC ***ZONE A SRB has increased!*** Please take advantage.
- Overall ARB Manning is 99% (INV/BA).

PERSIAN ***SRB has increased!*** Please take advantage.
- Overall PES Manning is 70% (INV/BA).

Billets are NOW coded for INT/ADV NECs, recommend updating your MNA searches and reaching out to the detailers for further information.

Rating conversions will be considered on a case-by-case basis.